

MIRAGE

D O O R S

S5000 VERTICAL LIFT COUNTERWEIGHT DOORS

SINGLE OR MULTIPLE LEAF DESIGN STEEL CONSTRUCTION



Mirage Counterweight Doors - Operational Clearances (To Be Read With The Drawings Overleaf)

Note: These dimensions are a guide only, and may vary according to site restrictions or door design features e.g. windloads, cladding, structural columns. For project - specific details please contact your nearest Mirage Industries representative.

<u>Item</u>	<u>Door Width</u>	<u>Door Width</u>	<u>Door Width</u>
5000 SERIES "VERTICAL LIFT" DOOR	Up to 3000mm	3000mm - 7000mm	7000mm - 10000mm
Nib Width	160mm - 200mm	200mm - 250mm	250mm - 400mm
Nib Depth	190mm - 220mm	220mm - 250mm	250mm - 400mm
Headroom - Manual Door	Door height+200mm	Door height+200mm	Door height+200mm
Headroom - Motorised Door	Door height+400mm	Door height+400mm	Door height+400mm

Call 1800 465 599 or visit www.miragedoors.com.au

Member of the
AMgroup

RECOMMENDED SPECIFICATIONS

Series 5000 vertical lift counterweight door, as manufactured by Mirage Industries Pty Ltd. Australia. This door is of a single or two leaf design which lifts and operates in a vertical position.

APPLICATIONS

Suitable where sufficient headroom exists to vertically raise the doors behind the building wall, overcoming the need to project the door inwards or outwards. Suitable for commercial and industrial use. Design wind loads range from a standard of 0.5kpa to cyclonic conditions, as required.

FRAME

The frames are constructed from steel hollow section and designed in accordance with AS1170.2-2002 and AS4100-1998, to withstand wind loading as required in the closed position and provide minimum deflection in the open position.

CLADDING OR GLAZING OPTIONS

Colorbond wall cladding, aluminium sheet panels, bar grille, weldmesh, amplimesh, timber, glass or acrylic. Discuss any other requirements with a Mirage rep.

LOCKING OPTIONS

- **Manual** - locking by internal pad-bolts to each side of the bottom of the door. (Padlocks supplied by others);
- **Lock-open** - a device to secure the door in the open position is fitted to all manual doors;
- **Motorised** - door held open or closed by the motorisation system.

COUNTERWEIGHT COVERS

Each jamb is typically encased in a folded steel cover for concealment of the tracks and counterweights.

SEAL OPTIONS

Brush, rubber or acoustic seals in various sizes are available.

FINISH

The standard finish is a prime paint to the frames and guide channels. Other options include enamel paint, powdercoating and polyurethane paint. Hot dipped galvanising is recommended for corrosive environments.

OPERATION

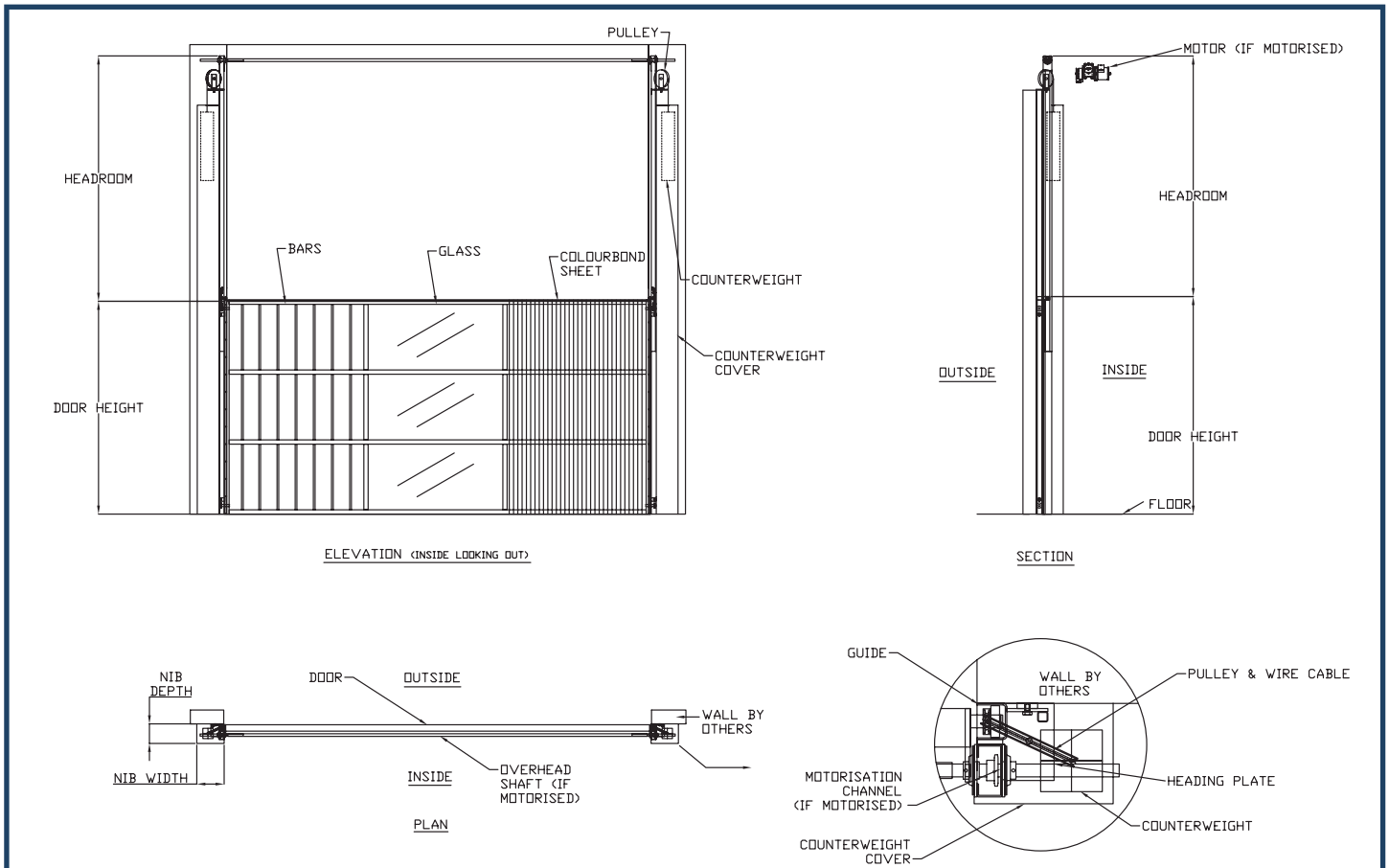
Doors may be electrically operated and fitted with control systems as required. The standard motor is a 1 hp clutch motor. Continuous rated or single phase motors are also available. Manually operated doors can be designed to suit future motorisation requirements.

OPTIONAL EXTRAS

- Access / personnel doors within the door;
- Remote control activation c/- photo electric beam protection;
- Integration / interfacing with parking system controls.

TIPS FOR ARCHITECTS & BUILDERS

- It is important to understand that the door tracks, hardware, door panels and counterweights are located BEHIND jamba;
- Preparation of openings to suit the Series 5000 door is by others. Recommended fixing surfaces are structural steel, concrete panels or core - filled masonry. Hollow masonry or stud walls are unsuitable fixing surfaces;
- For motorised doors, the recommended power supply is 3 phase 415v with neutral, terminated to an isolation switch located within one (1) metre of the motor. This work is by others;
- Counterweight doors are ideal for high cycle applications, offering exceptional reliability and long term durability.



Mirage has a continuous program of product development and reserves the right to change specifications at any time without notice.