

MIRAGE

D O O R S

S2000 HINGEAWAY COUNTERWEIGHT DOORS



Mirage Counterweight Doors - Operational Clearances (To Be Read With The Drawings Overleaf)

Note: These dimensions are a guide only, and may vary according to site restrictions or door design features e.g. windloads, cladding, structural columns. For project - specific details please contact your nearest Mirage Industries representative.

<u>Item</u>	<u>Door Width</u>	<u>Door Width</u>	<u>Door Width</u>
<u>2000 SERIES HINGEAWAY DOOR</u>	Up to 3000mm	3000mm - 7000mm	7000mm - 10000mm
Nib Width	160mm - 200mm	200mm - 250mm	250mm - 400mm
Nib Depth	190mm - 220mm	200mm - 250mm	250mm - 400mm
Forward Projection (approx.)	35 - 50% of door height	35 - 50% of door height	35 - 50% of door height
Internal Projection (approx.)	25 - 35% of door height	25 - 35% of door height	25 - 35% of door height
Headroom - Manual Door	200mm	300mm	375mm
Headroom - Motorised Door	400mm	400mm	400mm
Open Door Thickness	150mm	250mm	300mm

Call 1800 465 599 or visit www.miragedoors.com.au

Member of the
AMgroup

RECOMMENDED SPECIFICATIONS

Series 2000 Hingeaway counterweight balanced door as manufactured by Mirage Industries Pty. Ltd. Australia.

APPLICATIONS

Car park entries, showrooms, retail premises, restaurants and entertainment areas. The Series 2000 door is ideal where internal obstructions may prevent the door retracting fully within the building, and minimising headroom is a requirement.

FRAME

The frames are constructed from steel hollow section and designed in accordance with AS1170.2-2002 and AS4100-1998, to withstand wind loading as required in the closed position and provide minimum deflection in the open position.

CLADDING OR GLAZING OPTIONS

Colorbond wall cladding, aluminium sheet, bar grille, weldmesh, amplymesh, timber, glass, acrylic. Discuss any other requirements with a Mirage rep.

LOCKING OPTIONS

- **Manual** - locking by internal pad-bolts to each side of the bottom of the door. (Padlocks supplied by others).
- **Lock-open** - a device to secure the door in the open position is fitted to all manual doors.
- **Motorised** - door held open or closed by the motorisation system.

COUNTERWEIGHT COVERS

Each counterweight is encased in a folded steel cover for safety and improved appearance.

SEAL OPTIONS

Brush, rubber or acoustic seals in various sizes are available.

FINISH

The standard finish is a prime paint to the frames and guide channels. Other options include enamel paint, powdercoating and polyurethane paint. Hot dipped galvanising is recommended for corrosive environments.

POWER OPERATION

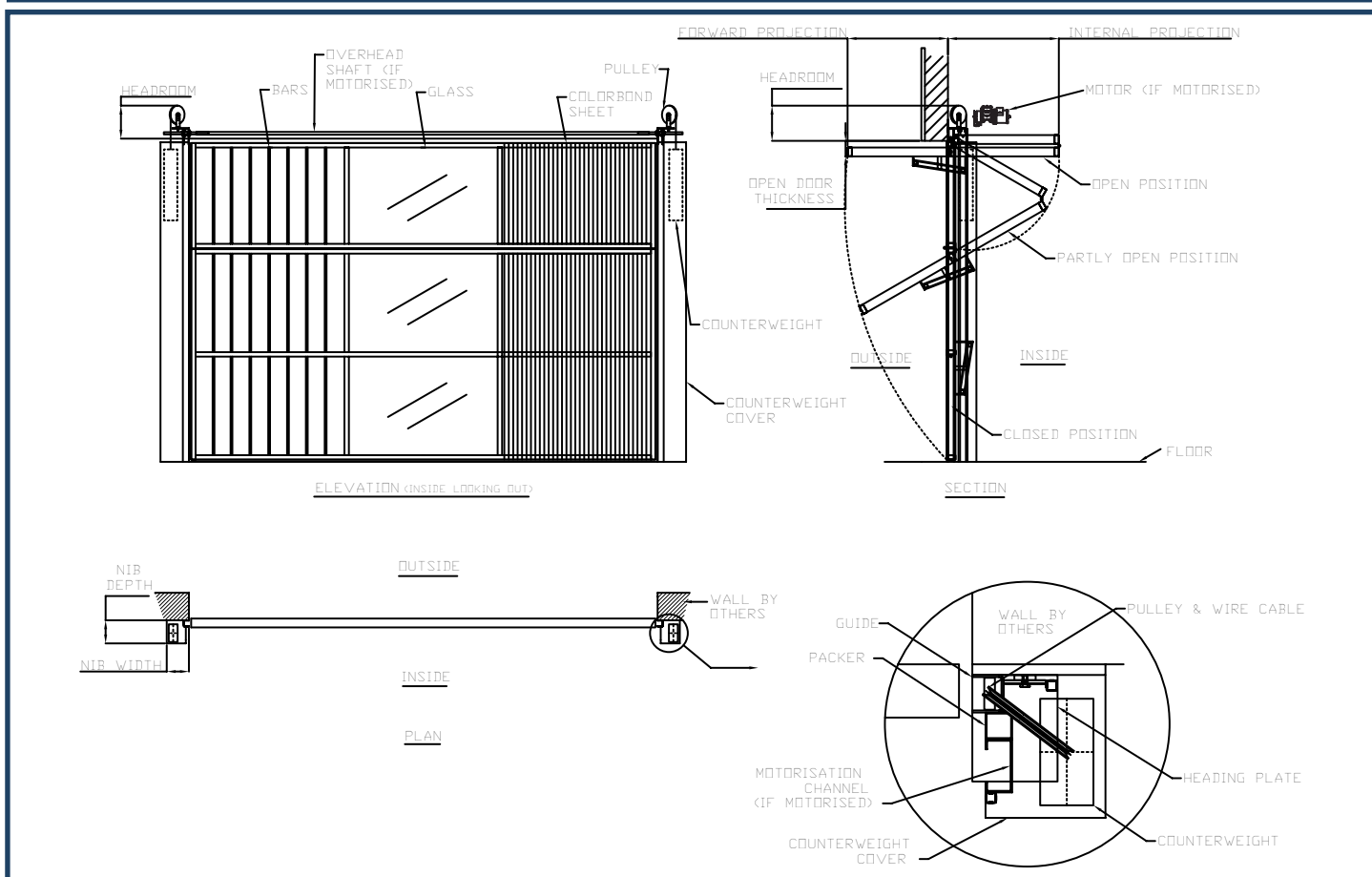
Doors may be electrically operated and fitted with control systems as required. The standard motor is a 1 hp clutch motor. Continuous rated or single phase motors are also available. Manually operated doors can be designed to suit future motorisation requirements for high cycle applications.

OPTIONAL EXTRAS

- Access / personnel doors within the door
- Remote control activation c/- photo electric beam protection
- Integration / interfacing with parking system controls

TIPS FOR ARCHITECTS & BUILDERS

- It is important to understand that the door tracks, hardware and counterweights are located **BEHIND** jambs. The door panel swings **IN - BETWEEN** the jambs;
- Preparation of openings to suit the Series 2000 door is by others. Recommended fixing surfaces are structural steel, concrete panels or core - filled masonry. Hollow masonry or stud walls are unsuitable fixing surfaces.
- The Series 2000 door is not recommended for manual operation. For motorised doors, the recommended power supply is 3 phase 415v with neutral, terminated to an isolation switch located within one (1) metre of the motor. This work is by others;
- Counterweight doors are ideal for high cycle applications, offering exceptional reliability and long term durability.



Mirage has a continuous program of product development and reserves the right to change specifications at any time without notice.