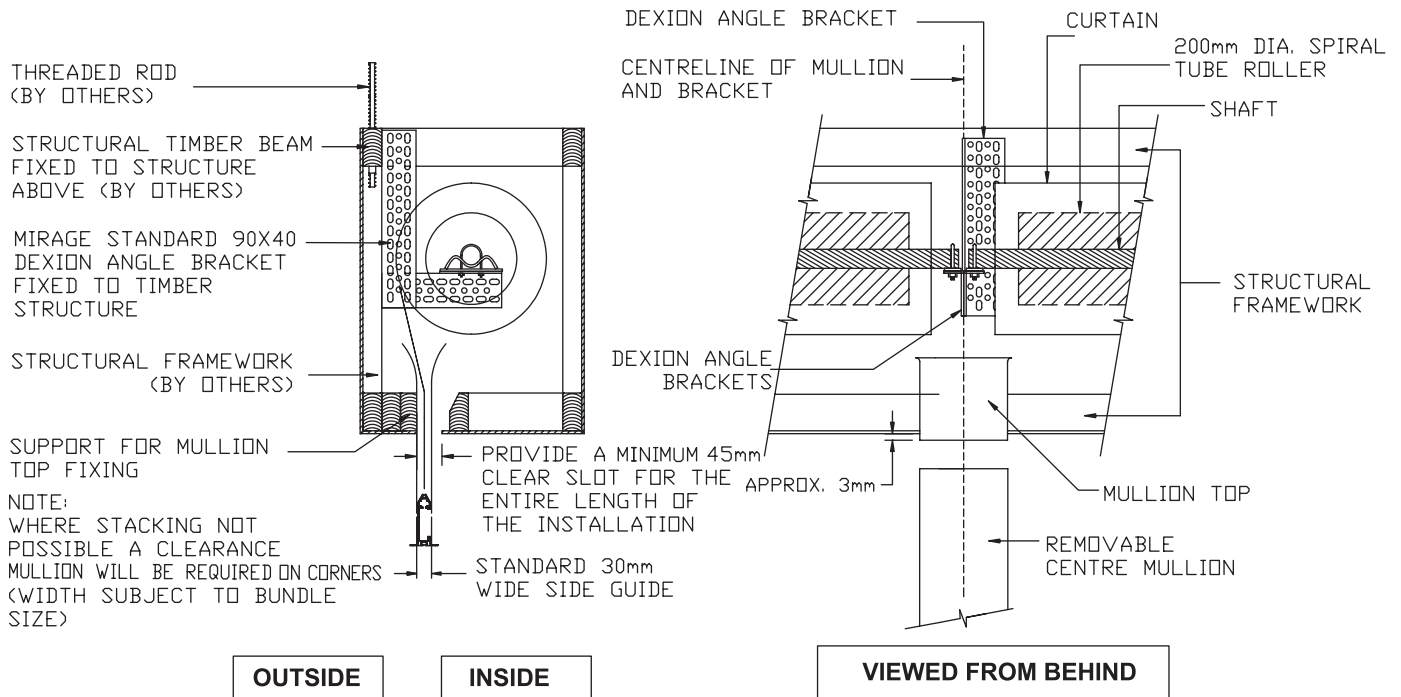


**SUGGESTED BULKHEAD DETAIL  
 WHEN A FIXED OR REMOVABLE CENTRE MULLION  
 IS INCORPORATED IN THE SHOPFRONT**

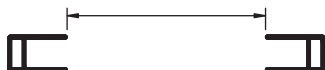
MANUAL OPERATION ONLY (ADDITIONAL CLEARANCE REQUIRED IF MOTORIZED)



BACK OF GUIDE TO BACK OF GUIDE

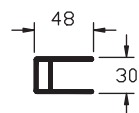


FRONT OF GUIDE TO FRONT OF GUIDE

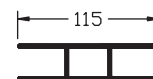


SCALE: NOT TO SCALE

SIDE GUIDE



CENTRE MULLION OR SIDE MULLION



If door is to be motorized removable mullions or removable guides are not acceptable.

Mirage Doors has a continuous program of product development and reserves the right to change specifications at any time without notice.

- PLEASE NOTE
1. IF INADEQUATE ACCESS IS PROVIDED MIRAGE WILL NOT BE HELD RESPONSIBLE FOR MAINTENANCE NOR THE COSTS INCURRED TO CREATE ADEQUATE ACCESS
  2. WHERE GRILLES/SHUTTERS ARE REQUIRED AT AN INTERNAL CORNER (i.e) 90° OR 135° ETC. ADDITIONAL HEADROOM CLEARANCE IS REQUIRED TO STACK ONE DRUM ABOVE THE OTHER. IF THIS IS NOT POSSIBLE A WIDE "CLEARANCE MULLION" WILL BE REQUIRED. REFER TO TECH. SHEET 4.
  3. ALL STRUCTURAL SUPPORTS FOR BRACKETS AND SIDE GUIDES TO BE PROVIDED BY OTHERS