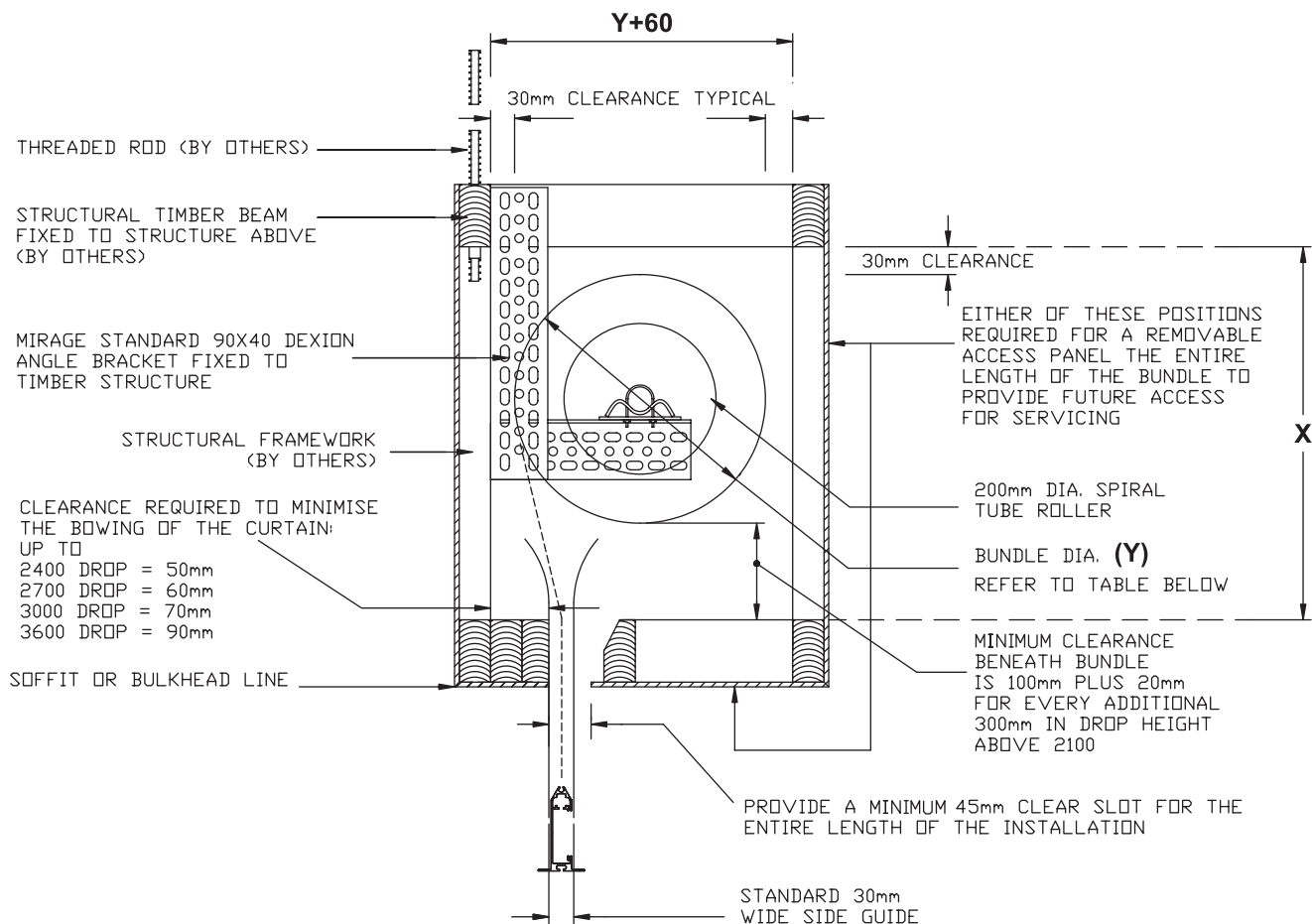


**SUGGESTED BULKHEAD DETAILS
MANUALLY OPERATED BY HAND TO SUIT**



SCALE: NOT TO SCALE

OUTSIDE

INSIDE

N.B THE INTERNAL END OF THE BULKHEAD MUST BE CLEAR TO AT LEAST THE BACK OF THE GUIDE OR OVERALL THE REMOVABLE SIDE MULLION

N.B DROP HEIGHT IS MEASURED FROM SOFFIT OR BULKHEAD LINE TO THE FLOOR

MANUAL OPERATION ONLY - FOR MOTORISED OPERATION REFER TO TECH SHEETS 7A, 7B, 7C & 7D

| MIRAGE TYPICAL DIMENSIONS REQUIRED FOR VARIOUS DROPS | | | | | | | | |
|-------------------------------------------------------------|------------|------------|------------|------------|------------|------------|------------|------------|
| DROP HEIGHT (mm) | 1200 | 1500 | 1800 | 2100 | 2400 | 2700 | 3000 | 3500 |
| BUNDLE DIAMETER Y (mm) | 290 | 300 | 320 | 330 | 340 | 370 | 400 | 420 |
| RECOMMENDED INTERNAL SPACE REQUIRED X (mm) | 420 | 430 | 450 | 460 | 490 | 540 | 590 | 630 |
| MINIMUM INTERNAL SPACE REQUIRED X (mm) | 400 | 410 | 430 | 440 | 450 | 480 | 510 | 530 |

Mirage Doors has a continuous program of product development and reserves the right to change specifications at any time without notice.

- PLEASE NOTE
- IF INADEQUATE ACCESS IS PROVIDED MIRAGE WILL NOT BE HELD RESPONSIBLE FOR MAINTENANCE NOR THE COSTS INCURRED TO CREATE ADEQUATE ACCESS
 - ALL STRUCTURAL SUPPORTS FOR BRACKETS AND SIDE GUIDES TO BE PROVIDED BY OTHERS