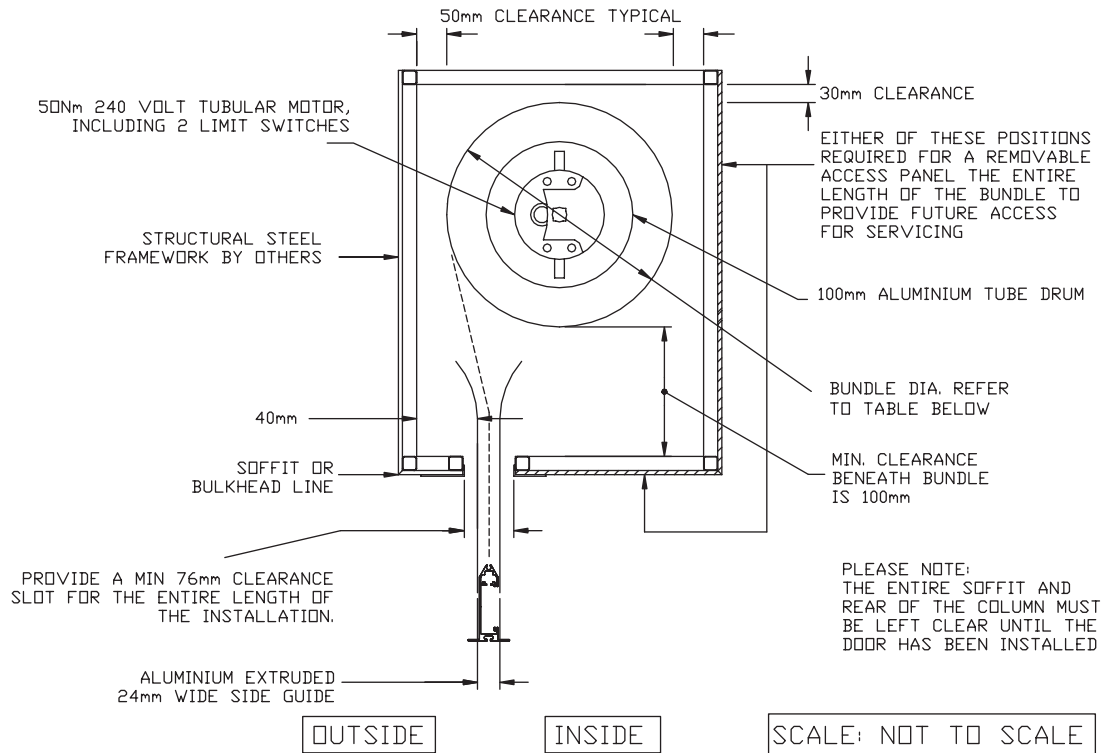


### TUBULAR MOTORISED SERIES 35 ALUMINIUM ROLLER SHUTTER SUGGESTED BULKHEAD DETAILS



N.B THE INTERNAL END OF THE BULKHEAD MUST BE CLEAR TO AT LEAST A MINIMUM OF 65mm OR A RECOMMENDED 153mm FROM THE DAYLIGHT OPENING, i.e THE FRONT OF THE GUIDE (REFER TO TECH SHEETS 15C AND 15D)

N.B DROP HEIGHT IS MEASURED FROM SOFFIT OR BULKHEAD LINE TO THE FLOOR

N.B REMOVABLE MULLIONS ARE NOT RECOMMENDED FOR THIS PRODUCT

N.B A MANUAL RELEASE MECHANISM IS NOT AVAILABLE WITH THIS PRODUCT

N.B LOCKS SHOULD NOT BE FITTED, BUT SOME LIFTING OF THE SHUTTER MAY BE POSSIBLE

| MIRAGE TYPICAL DIMENSIONS REQUIRED FOR VARIOUS DROPS |     |      |      |      |      |      |
|--|-----|------|------|------|------|------|
| Drop Height  | 900 | 1200 | 1500 | 1800 | 2100 | 2400 |
| Bundle Dia.  | 180 | 190  | 200  | 230  | 240  | 250  |
| Min Total Horizontal Internal Space Required         | 280 | 290  | 300  | 330  | 340  | 350  |
| Min Total Vertical Internal Space Required           | 310 | 320  | 330  | 360  | 370  | 380  |

|               | Width | Height |
|---------------|-------|--------|
| MAXIMUM SIZES | 2400  | 2250   |
| MINIMUM SIZES | 800   | 300    |

Refer to your Mirage representative for weights of the roller doors.

Mirage Doors has a continuous program of product development and reserves the right to change specifications at any time without notice.

- PLEASE NOTE
1. IF INADEQUATE ACCESS IS PROVIDED MIRAGE WILL NOT BE HELD RESPONSIBLE FOR MAINTENANCE NOR THE COSTS INCURRED TO CREATE ADEQUATE ACCESS
  2. MIRAGE TUBULAR MOTORIZED SHUTTERS MUST BE INSTALLED TO STRUCTURAL SUPPORTS i.e. TIMBER STUDS, CORE FILLED MASONRY, TILT UP CONCRETE PANELS
  3. ALL STRUCTURAL SUPPORTS FOR BRACKETS AND SIDE GUIDES TO BE PROVIDED BY OTHERS
  4. ALL WIRING AND SETTING OF LIMITS BY OTHERS