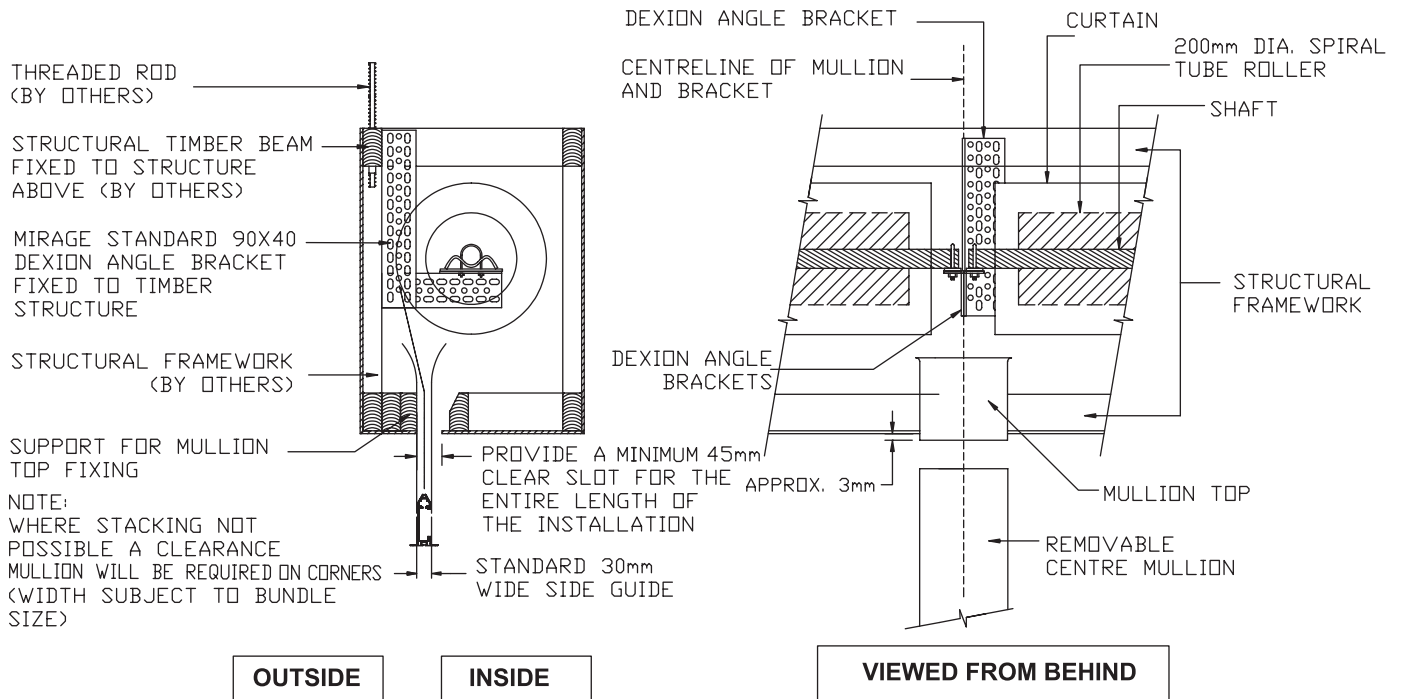


SUGGESTED BULKHEAD DETAIL WHEN A FIXED OR REMOVABLE CENTRE MULLION IS INCORPORATED IN THE SHOPFRONT

MANUAL OPERATION ONLY (ADDITIONAL CLEARANCE REQUIRED IF MOTORISED)



BACK OF GUIDE TO BACK OF GUIDE

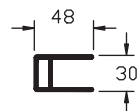


FRONT OF GUIDE TO FRONT OF GUIDE

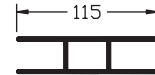


SCALE: NOT TO SCALE

SIDE GUIDE



CENTRE MULLION OR SIDE MULLION



If door is to be motorized removable mullions or removable guides are not acceptable.

Mirage Doors has a continuous program of product development and reserves the right to change specifications at any time without notice.

- PLEASE NOTE
1. IF INADEQUATE ACCESS IS PROVIDED MIRAGE WILL NOT BE HELD RESPONSIBLE FOR MAINTENANCE NOR THE COSTS INCURRED TO CREATE ADEQUATE ACCESS
 2. WHERE GRILLES/SHUTTERS ARE REQUIRED AT AN INTERNAL CORNER (i.e) 90° OR 135° ETC. ADDITIONAL HEADROOM CLEARANCE IS REQUIRED TO STACK ONE DRUM ABOVE THE OTHER. IF THIS IS NOT POSSIBLE A WIDE "CLEARANCE MULLION" WILL BE REQUIRED. REFER TO TECH. SHEET 4.
 3. ALL STRUCTURAL SUPPORTS FOR BRACKETS AND SIDE GUIDES TO BE PROVIDED BY OTHERS