

# SUGGESTED COLUMN DETAILS MANUALLY OPERATED BY HAND TO SUIT

MINIMUM

## OUTSIDE

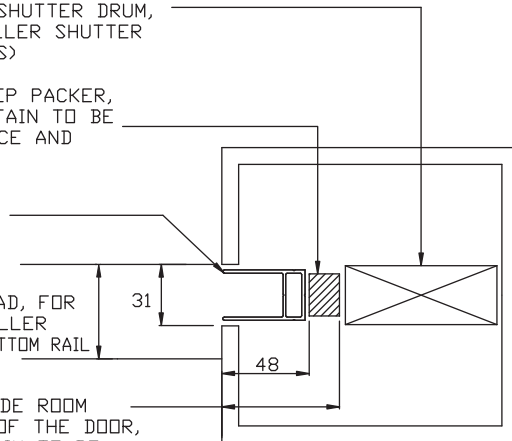
TIMBER STUD FIXED BETWEEN THE FLOOR AND THE BUILDING STRUCTURE ABOVE THE ROLLER SHUTTER DRUM, TO SUPPORT THE ROLLER SHUTTER (SUPPLIED BY OTHERS)

REMOVABLE 18MM DEEP PACKER, TO ENABLE THE CURTAIN TO BE REMOVED FOR SERVICE AND MAINTENANCE

STANDARD SIDE GUIDE 30WIDE X 48DEEP

45mm MINIMUM SLOT IN UNDERSIDE OF BULKHEAD, FOR ENTIRE LENGTH OF ROLLER DOOR, TO ACCOMMODATE BOTTOM RAIL

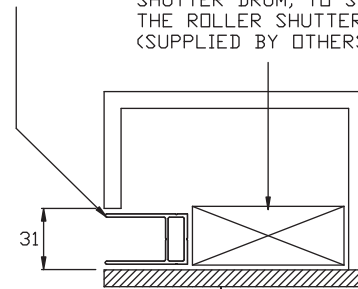
66mm RECOMMENDED SIDE ROOM REQUIRED EACH SIDE OF THE DOOR, TO ENABLE THE CURTAIN TO BE REMOVED FOR SERVICE AND MAINTENANCE



ALTERNATIVE 1

STANDARD SIDE GUIDE 30WIDE X 48DEEP

TIMBER STUD FIXED BETWEEN THE FLOOR AND THE BUILDING STRUCTURE ABOVE THE ROLLER SHUTTER DRUM, TO SUPPORT THE ROLLER SHUTTER (SUPPLIED BY OTHERS)



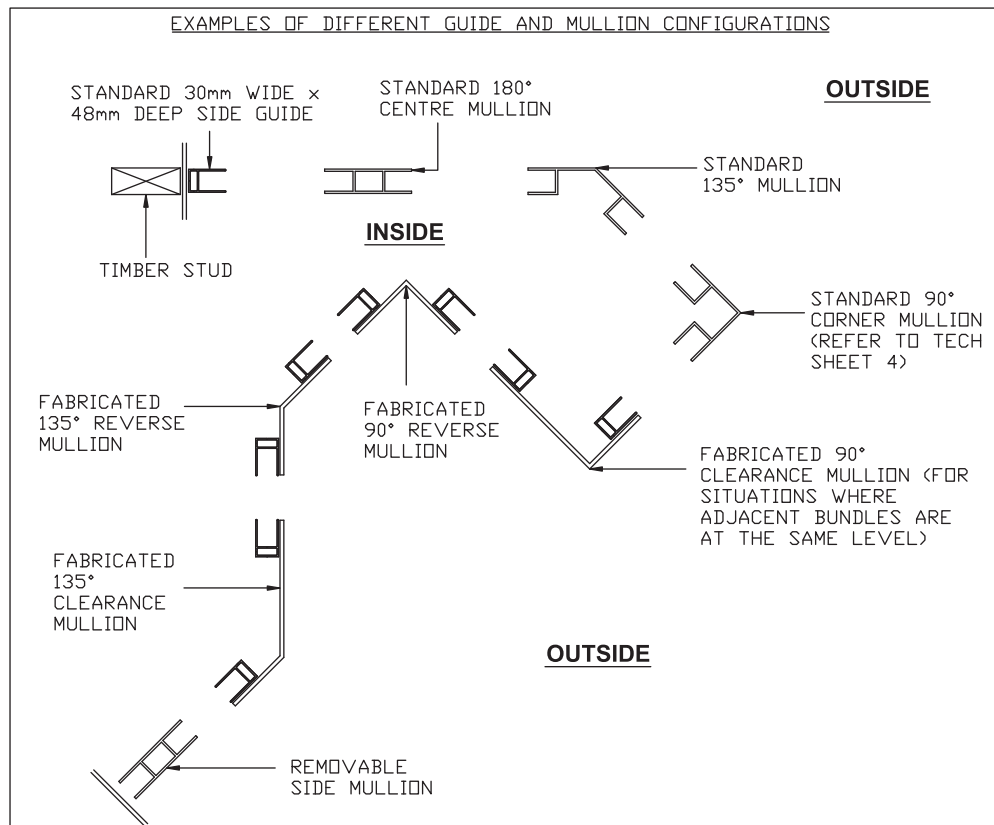
REMOVABLE INTERNAL LINING

48mm MINIMUM SIDEROOM RECOMMENDED EACH SIDE OF THE DOOR

ALTERNATIVE 2

## INSIDE

### EXAMPLES OF DIFFERENT GUIDE AND MULLION CONFIGURATIONS



MIRAGE INDUSTRIES PTY. LTD HAS A CONTINEOUS PROGRAM OF PRODUCT DEVELOPMENT AND RESERVES THE RIGHT TO CHANGE SPECIFICATIONS AT ANY TIME WITHOUT NOTICE  
PLEASE NOTE

1. IF INADEQUATE ACCESS IS PROVIDED MIRAGE WILL NOT BE HELD RESPONSIBLE FOR MAINTENANCE NOR THE COSTS INCURRED TO CREATE ADEQUATE ACCESS
2. ALL STRUCTURAL SUPPORTS FOR BRACKETS AND SIDE GUIDES TO BE PROVIDED BY OTHERS