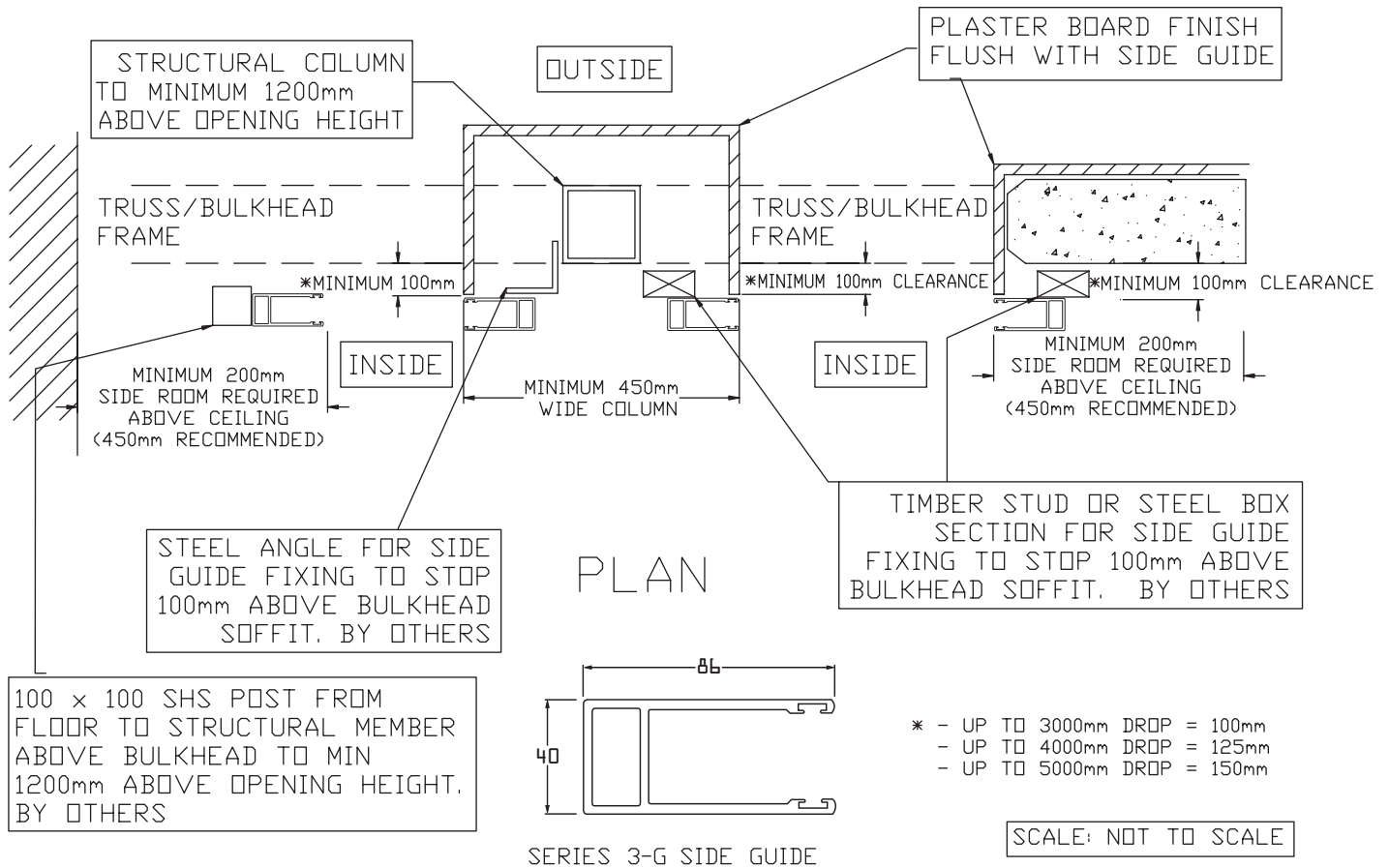


**SERIES 70 MOTORISED ROLLER GRILLES
RECOMMENDED COLUMN PREPARATION & CLEARANCE CHART**



Refer	MIRAGE TYPICAL DIMENSIONS REQUIRED FOR VARIOUS DROPS										
Diagrams	Drop Height	1800	2100	2400	2700	3000	3300	3600	3900	4200	4500
(Sheet 5)	Bundle Dia	360	370	380	390	400	410	420	430	440	450
1	Min Vertical Clearance Motor Below (mm) - A	860	885	890	895	900	905	910	915	920	925
2	Min Vertical Clearance Motor Above (mm) - B	1200	1200	1200	1200	1200	1200	1200	1200	1200	1200
3	Min Vertical Clearance Motor Behind (mm) - C	680	690	700	710	720	730	740	750	760	770
	Min Total Horizontal Internal Bulkhead Clearance Required	Refer to Sheet 5 Drawings for Operational Clearances									

NOTES:

- Series 70 roller grilles must be installed to structural supports i.e. core - filled masonry, structural steel or concrete. Timber or aluminium supports are deemed inadequate;
- Preparation of openings to suit the quoted products is by others;
- The Series 70 roller grille is NOT recommended for applications exceeding six (6) cycles per day;
- The weight of a Series 70 roller grille is approx. 15kg / m²;
- For motorised shutters, provision of an appropriate power supply is by others.
- Tech. Data Sheets 5 & 6 show the offset of guides to the head. This is called over - centre roll. It minimises the curtain deflection inevitable with wide openings, and in turn permits a narrow ceiling slot. Over - centre roll is recommended where shutters are contained within a bulkhead or ceiling.