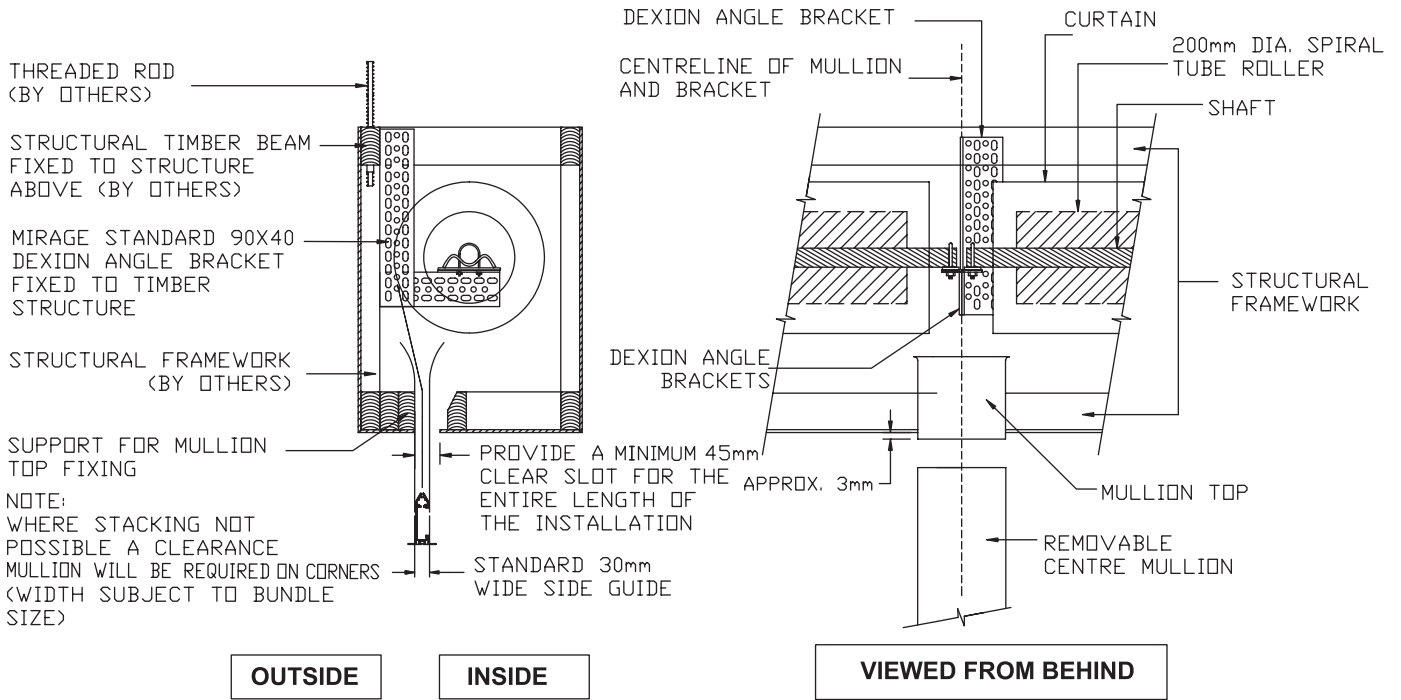
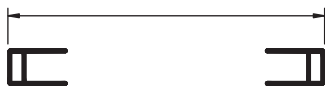


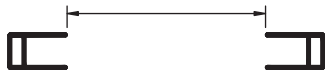
**SERIES 1 ROLLER SHUTTERS RECOMMENDED BULKHEAD DETAIL
WHEN FIXED OR REMOVABLE MULLIONS ARE REQUIRED**



BACK OF GUIDE TO BACK OF GUIDE

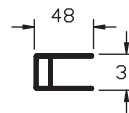


FRONT OF GUIDE TO FRONT OF GUIDE

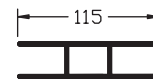


SCALE: NOT TO SCALE

SIDE GUIDE



CENTRE MULLION OR SIDE MULLION



If door is to be motorized removable mullions or removable guides are not acceptable.

NOTES:

1. The provision of structural supports to enable attachment of corner mullions is by others.
2. The provision of suitable ceiling / bulkhead access is by others;
3. As Mirage products are mechanical, full length bulkhead or ceiling access is recommended. It is NOT recommended to install roller shutters inside a set ceiling or bulkhead. As such, Mirage Doors is not responsible for costs that may occur to achieve access inside a set ceiling or bulkhead.