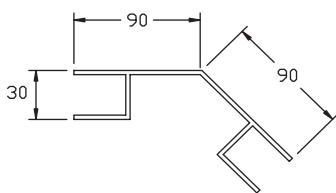
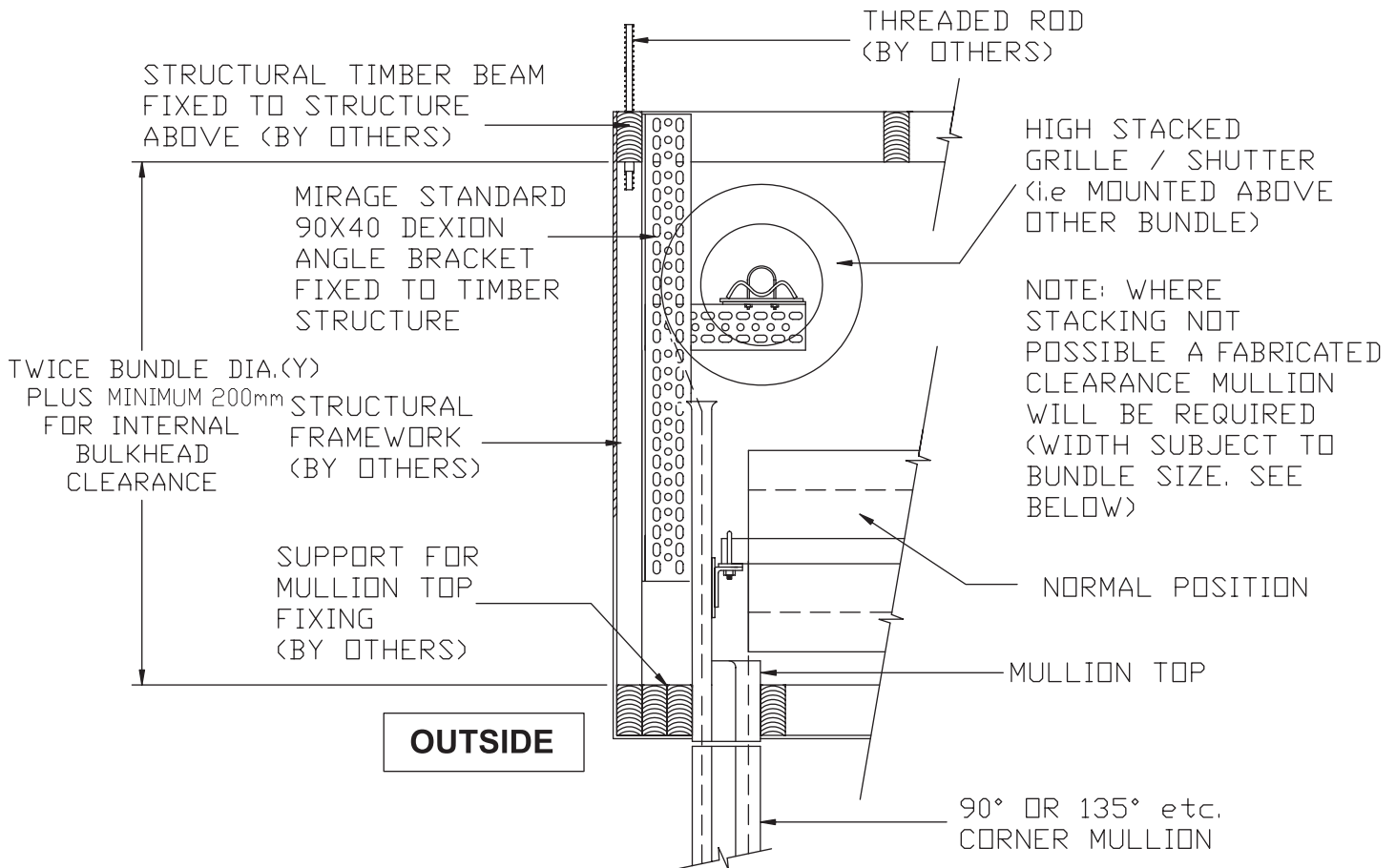
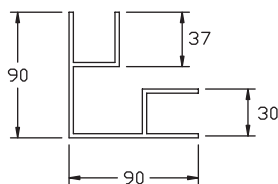


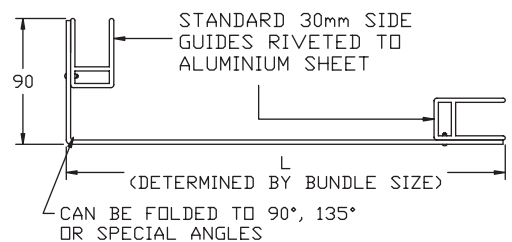
**SERIES 1 ROLLER SHUTTERS MOUNTING POSITION FOR
INTERNAL CORNER MULLION INSTALLATIONS**



STANDARD 135° MULLION



STANDARD 90° MULLION



FABRICATED CLEARANCE MULLION

NOTES:

1. Two drums cannot meet on the same level unless a wide clearance mullion is installed;
2. Alternately, if adequate headroom exists, one drum may be mounted above the other, and a standard mullion may be used;
3. The provision of structural supports to enable attachment of corner mullions is by others.
4. The provision of suitable ceiling / bulkhead access is by others;
5. As Mirage products are mechanical, full length bulkhead or ceiling access is recommended. It is NOT recommended to install roller shutters inside a set ceiling. As such, Mirage Doors is not responsible for costs that may occur to achieve access inside a set ceiling or bulkhead.