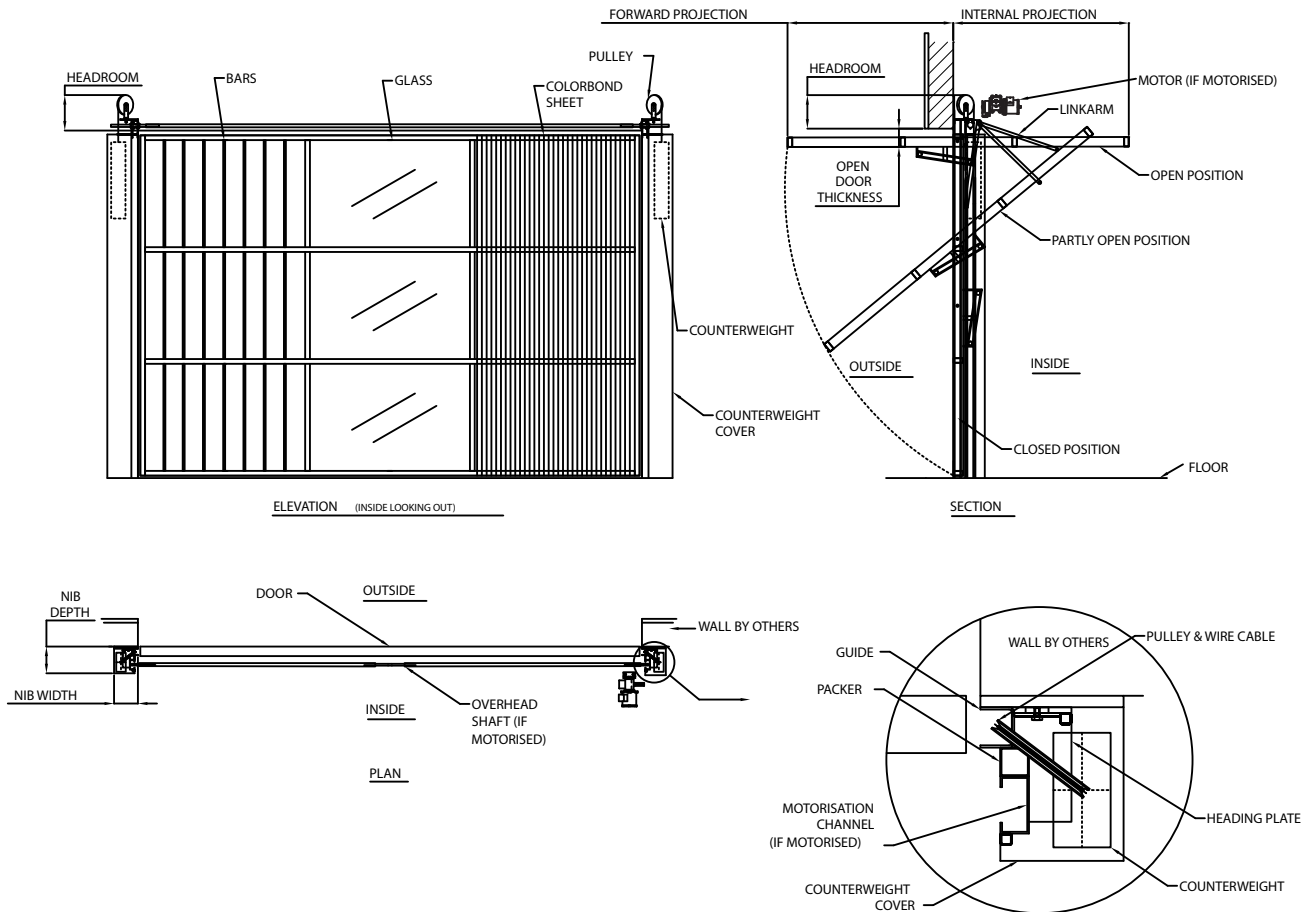


SERIES 1000 SINGLE LEAF PARTLY RECESSED COUNTERWEIGHT DOOR



HEADROOM AND SIDEROOM CLEARANCES:

	Up to 3000mm	3000mm - 7000mm	7000mm - 10000mm
Door Width	Up to 3000mm	3000mm - 7000mm	7000mm - 10000mm
Nib Width	160mm - 220mm	220mm - 250mm	N/A
Nib Depth	190mm - 220mm	220mm - 250mm	N/A
Forward Projection	(approx) 40% of door height	(approx) 40% of door height	N/A
Internal Projection	(approx) 60% of door height	(approx) 60% of door height	N/A
Headroom - Manual Door	200mm	300mm	N/A
Headroom - Motorised Door	400mm	400mm	N/A

NOTES:

- Counterweight doors must be installed to structural materials. Suitable materials include concrete, core – filled masonry, RHS steel or PFC channels. Unsuitable materials are metal stud walls, office partition walls or hollow masonry. Jambs must be plumb and true.
- All counterweight door tracks are fitted behind the walls – not between the walls or in front of the walls.
- Mirage counterweight doors are suitable for high cycle applications.
- The maximum recommended opening size for a Series 1000 door is 7000mm wide x 4000mm high