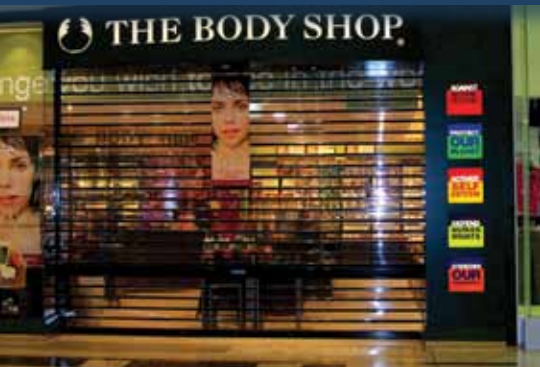
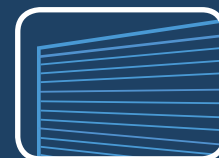


CLEARLINE ROLLER SHUTTERS

EXTRUDED POLYCARBONATE & ALUMINIUM



The Clearline Roller Shutter has been developed to give the highest level of vision whilst providing security and natural light flow. No lost display or floor space after you have locked up, due to Clearline pilfer proof design, it also protects your stock from dust and vermin.

RECOMMENDED SPECIFICATIONS

Clearline Vision Roller Shutters, as manufactured by Mirage Industries Pty. Ltd., Australia. Product Code AE / CP / 115.

APPLICATIONS

Suitable for shopping centres, clubs, video shelves, entrances, book stores and especially good for food handling areas.

CURTAIN

Made of alternating full width extruded slats, 1.5mm thick x 98mm high clear polycarbonate, and rigid aluminium joining slats. Both ends of every aluminium slat are filled with a solid nylon clip that secures slats laterally and takes up wear. The Clearline may be installed forward roll or reverse roll, without affecting the appearance and function of the installation.

CLEARLINE BOTTOM RAIL

Shall consist of a robust extruded aluminium section, fitted with a rear Colourbond® steel coverplate, designed to completely house a key operated lock.

Waist high rail and locking.

SIZES

Widths - Any width of opening may be protected by fitting the "Mirage" removable or fixed standard 180, 135 or 90 degree mullion between individual shutters. For maximum sizes per shutter please contact manufacturer.

FINISH

Standard aluminium colours are anodised matt natural, matt medium bronze and matt black. Other colours and polyester powder coating finishes are available on request, with supply dependent upon availability.

Call 1800 465 599 or visit www.miragedoors.com.au



OPERATION

The roller drum is installed overhead in a horizontal position. Mirage vision roller shutters are spring counter-balanced for manual operation.

- Manual by hand up to 3 meters wide by 3 meters high. Refer to Technical Data Sheet No. 1 & 4
- Electric operation using our unique lock spring bracket 2.40v (size up to 5.5 meters wide by 4 meters high) Refer to Technical Data Sheet No. 7A & 7D

PLEASE CONSULT YOUR MIRAGE SALES REP FOR DETAILS.

LOCKING

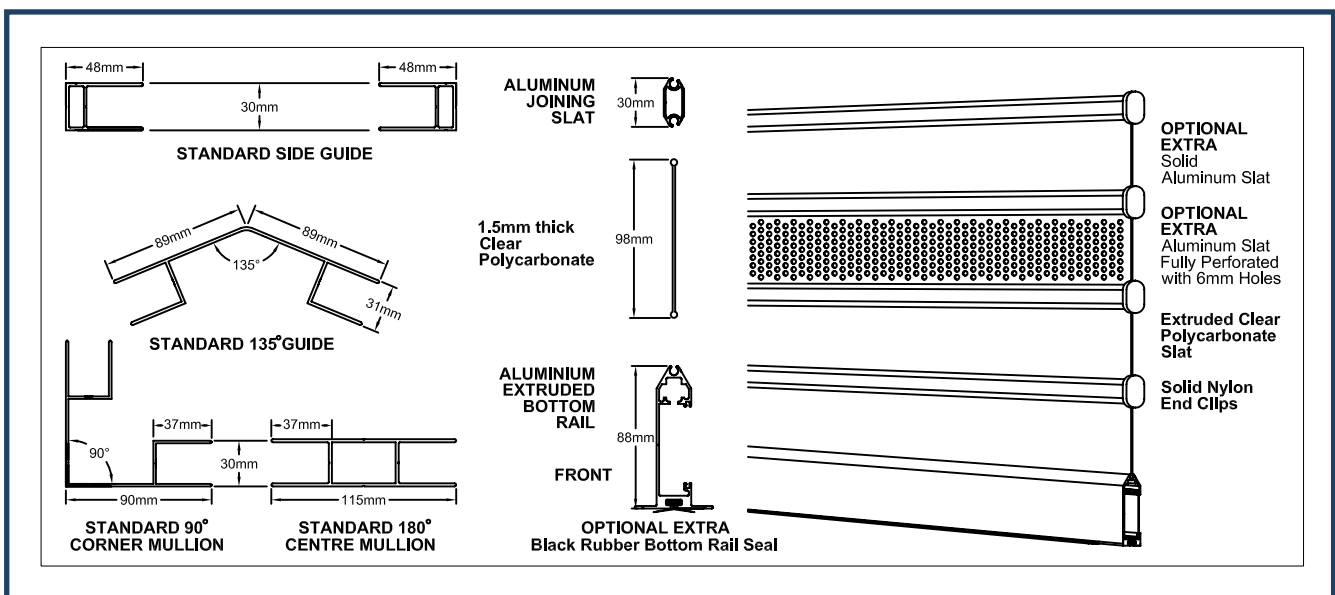
Mirage bottom rail tumbler lock centrally mounted with cylinder operated sliding latch and solid steel plated shoots to side guides. Outside locking unless otherwise specified in writing. Rear snib release or locking from both sides is also available at no extra charge if requested when original order is placed. Another alternative is sliding steel padbolts to each end of bottom rail (Pad locks supplied by others).

ROLLER DRUM

Drum shall be manufactured from a 200mm diameter, mild steel drum, attached to metal pressed steel end caps. Drum to be attached to ends completely concealing the counter-balance mechanism. Helical coil oil tempered springs shall be installed inside the drum, which shall revolve on nylon bearings. Spring tension shall be factory set and finally adjusted in the field and locked in the operating position by the installer.

OPTIONAL EXTRAS

- Ventilation Slots - The vision/polycarbonate slats can be pierced with 127mm long and 28mm high ventilation slots. These slots may be specified by Developers so that flow of air-conditioned air is not restricted. Product Code AE/CP/115 Ventilated.
- Solid Aluminium Slats - Any number of the clear polycarbonate slats can be substituted with solid aluminium slats of the same size and function. The benefit is added strength and restricted vision. Product Code AE/CA/115 Solid.
- The above aluminium slats can have slots 127mm long and 28mm high punched at 52mm intervals. The benefit is vision and airflow. Product Code AE/CA/115 Ventilated.
- Multi Hole - This solid slat may also be perforated with a series of 6mm holes. The benefit is good airflow, vision and vermin restriction. Product Code AE/CA/115 Multi Hole.
- Lockwood cylinder keyed to one side only.
- Designed to enable the 'client' to master key to there requirements by others. Please note that this cylinder protrudes from the face of the bottom rail by up to 25mm.
- An additional locking rail - may be added for the convenience of locking at waist high or to add lateral strength to wider shutters.



Mirage has a continuous program of product development and reserves the right to change specifications at any time without notice.

Call 1800 465 599 or visit www.miragedoors.com.au

